

1. Download the latest **timax\_xp.exe** installation pack from [www.outboard.co.uk](http://www.outboard.co.uk), or copy it from the TiMax CDRom. Click on the Setup  icon to run the TiMax installation program.




2. Follow the TiMax-InstallShield Wizard instructions, e.g. Next., Accept Licence, Customer Information, then select Typical setup, hit Next then hit Finish. TiMax Installer will ask you if you want to re-start the PC, hit Yes. After the PC has fully re-booted, switch it off again.



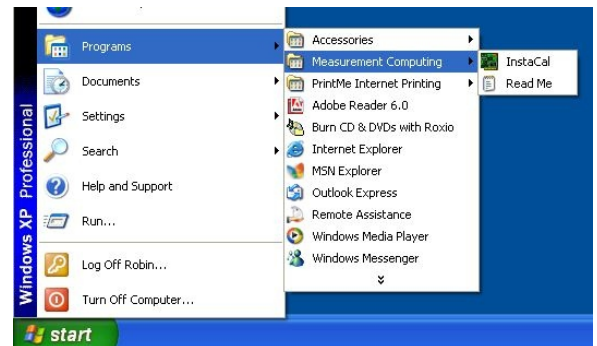
3. Install the PCI or PCMCIA card in the PC, switch on the PC and the "Found New Hardware" Plug n Play wizard will pop up to guide you.

4. Ensure the ".automatically.. (Recommended)" install box is ticked in the Wizard, and press Next. The Wizard will locate and Install the driver, then when it tells you it has Completed, hit Finish.

5. After the PC has re-booted, click on the Instacal  Icon



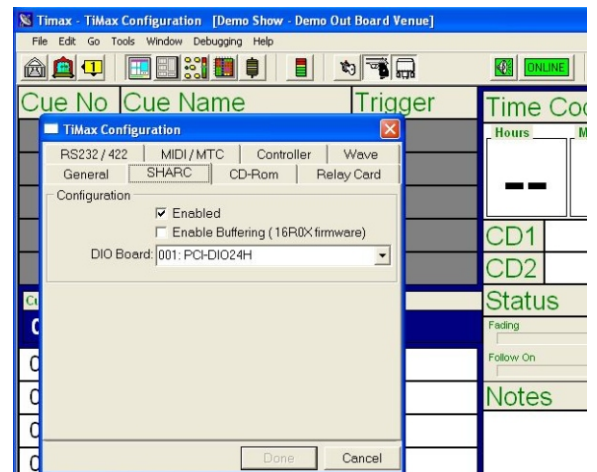
on your desktop, or go to Start > Programs > Measurement Computing and click on Instacal. This will configure the PCI or PCMCIA card in your PC.



6. When the Plug n Play Board Detection message comes up confirming your PCI or PCMCIA card has been detected, hit OK. When the Instacal screen comes up, you will just see your PCI or PCMCIA card in the list. Close the Instacal screen.

7. Now double-click the TiMax shortcut on the desktop, enter the password **obe10** when asked, TiMax will come up with a "Hardware Not Found" error message. Hit OK and the TiMax software will open in the Playlist screen.

8. Select Tools on the top toolbar, select Configuration, then hit the SHARC tab. Select your PCI card or PCMCIA card in the DIO Board pull down menu. Then Tick the Enabled box (DO NOT tick the Enable Buffering box), then hit Done, then re-start the TiMax software.



TiMax will now boot up to the top of the Playlist, after you enter the password **obe10**, and will be ready for you to start programming (see TiMax User Manual and Quick Reference Guides for details). **You will only need to go through these procedures the first time you install your PCI or PCMCIA card and the TiMax software. Afterwards, every time you boot the TiMax software it will find the TiMax DSP unit automatically.**