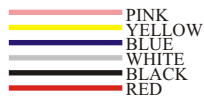
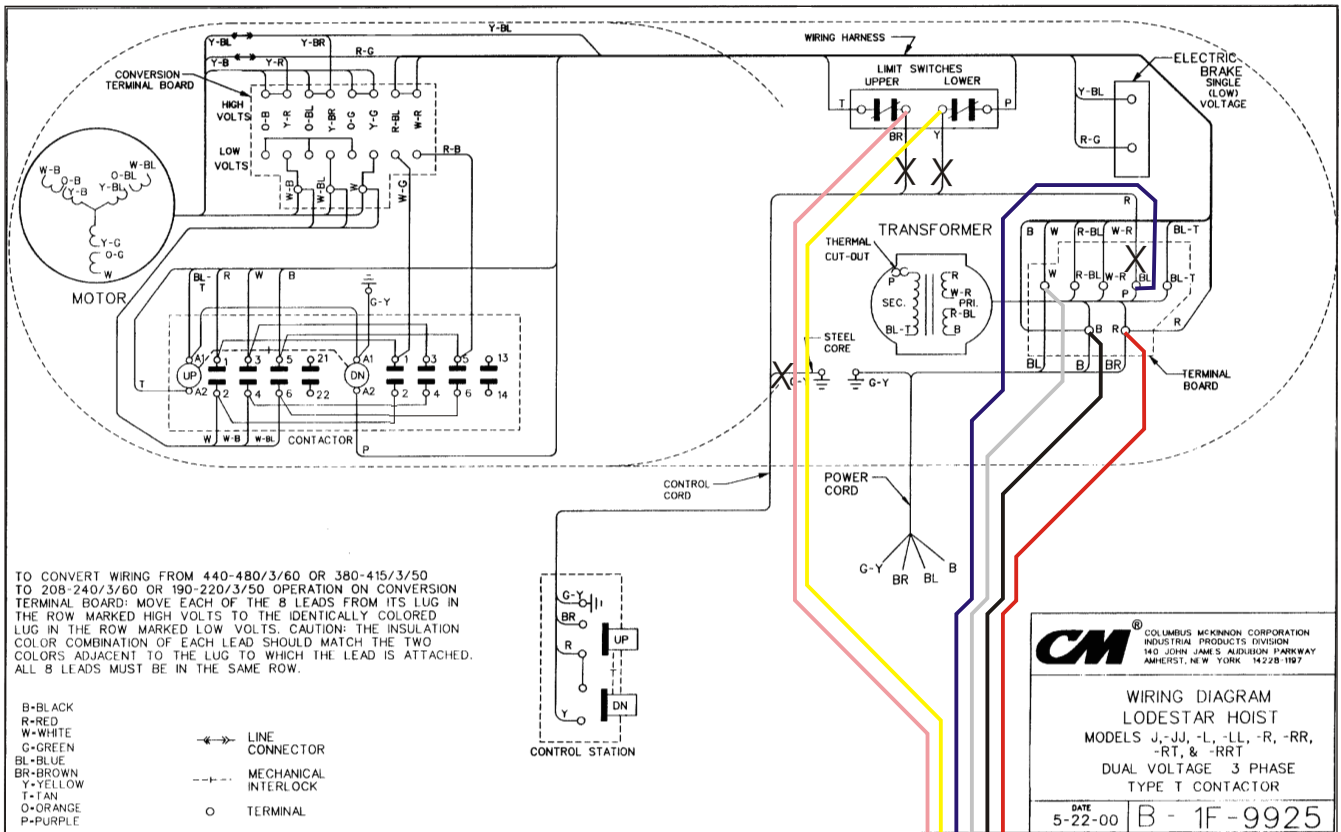


Fitting a Smartlimit



CABLE DESTINATION

RED	TRANSFORMER LUG:RED
BLACK	TRANSFORMER LUG:BLA
WHITE	TRANSFORMER LUG:WHI
BLUE	TRANSFORMER LUG:BLU
PINK	UPPER LIMIT SWITCH
YELLOW	LOWER LIMIT SWITCH

TERMINAL BOARD
 RED Lug: RED
 BLACK Lug: BLA
 WHITE Lug: WHI
 BLUE Lug: BLU
 LIMITSWITCHES
 PINK Upper
 YELLOW Lower
 Tested: _____ Date: _____

SMARTLIMIT

out board

- 1/ Change over the wire links on the output of the contactor assembly So that 2 links to 2, 4 links to 4 and 6 links to 6.
- 2/ Remove direction control cable from motor. (Cables marked X)
- 3/ Fit loom assemble through motor from contactor to transformer terminal board.
- 4/ Make connection as instructed above.